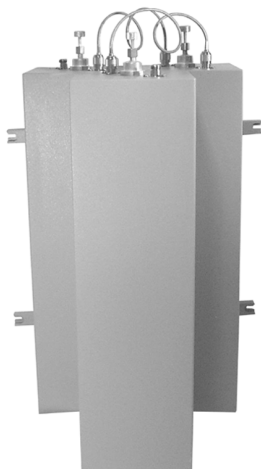


CAVITY RESONATORS

UHF 240 - 375 MHz

6467/SBE-3



6567/SBA



6567/SBAH-2



ELECTRICAL SPECIFICATIONS

Model Number	6467/SBE	6567/SBA	6567/SBAH
Frequency Band (MHz)	240-300	300-375	300-375
Input Power-See Appl. Notes	200 W	200 W	250 W
Insertion Loss	See Application Notes on Page 45		
Attenuation	See Charts Below	See Charts Below	See Charts Below
Impedance	50 Ω	50 Ω	50 Ω
VSWR	1.5:1 or Better	1.5:1 or Better	1.5:1 or Better
Electrical Length	1/4 λ	1/4 λ	1/4 λ
Temp Range	- 22 to +140 °F - 30 to +60 °C	- 22 to +140 °F - 30 to +60 °C	- 22 to +140 °F - 30 to +60 °C

MECHANICAL SPECIFICATIONS

Dim (d x w)		7" x 7"	7" x 7"	7" x 7"
Individual Cavity		178 x 178 mm	178 x 178 mm	178 x 178 mm
Dim (Height)	Inches	26" - 34 1/4"	14" - 19"	14" - 19"
Individual Cavity	Metric	661 - 870 mm	356 - 483 mm	356 - 483 mm
Connectors		N Female	N Female	N Female
Finish		EMR Gray	EMR Gray	EMR Gray
Ship Weight: Single		16 lbs. (7.3 kg.)	14 lbs. (6.4 kg.)	15 lbs. (6.9 kg.)
Dual		32 lbs. (14.6 kg.)	22 lbs. (10.0 kg.)	24 lbs. (10.9 kg.)
Triple		65 lbs. (29.5 kg.)	30 lbs. (13.7 kg.)	35 lbs. (15.9 kg.)

BAND PASS

