

# INTERMODULATION CONTROL DEVICES

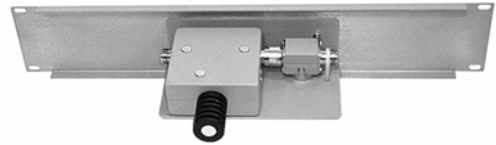
## 66 - 88 MHz

Model No. List Price	Frequency	Isolator Stage	Pwr: Input Refl	Bandwidth: Fixed	Insertion Loss	Isolation	Load Termination	Actual Dimensions Inches Metric	Ship Wt. lbs kg.
73412 \$920.00	66-88	Single	30 W 15 W	See Page 38 Figure 1 & 2	0.65 dB	35+ dB	15 W	3 1/2 x 19 x 4 3/4 89 x 483 x 121	5 2.3
73413 \$945.00	66-88	Single	50 W 30 W	See Page 38 Figure 1 & 2	0.65 dB	35+ dB	30 W	3 1/2 x 19 x 4 3/4 89 x 483 x 121	5 2.3
73414 \$980.00	66-88	Single	50 W 50 W	See Page 38 Figure 1 & 2	0.65 dB	35+ dB	60 W	3 1/2 x 19 x 7 89 x 483 x 178	5 2.3
73514 OBSOLETE	66-88	Single	75 W 60 W	See Page 38 Figure 1 & 2	0.65 dB	35+ dB	60 W	3 1/2 x 19 x 7 89 x 483 x 178	5 2.3
73514/H \$1,245.00	66-88	Single	100 W 60 W	See Page 38 Figure 1 & 2	0.65 dB	35+ dB	60 W	5 1/4 x 19 x 7 134 x 483 x 178	5 2.3
73515/H \$1,600.00	66-88	Single	100 W 125 W	See Page 38 Figure 1 & 2	0.65 dB	35+ dB	125 W	5 1/4 x 19 x 6 1/2 134 x 483 x 166	9 4.1
73515A/HF \$1,935.00	66-88	Single	150 W 150 W	See Page 38 Figure 1 & 2	0.65 dB	35+ dB	150 W	8 3/4 x 19 x 9 1/4 223 x 483 x 235	12 5.5

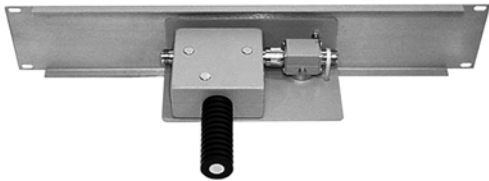
**IM PANELS**



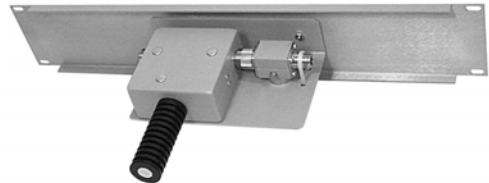
73412



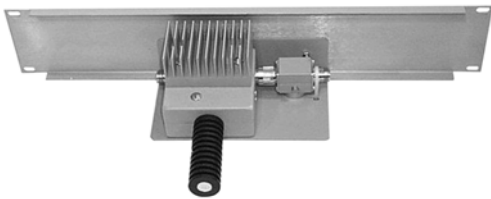
73413



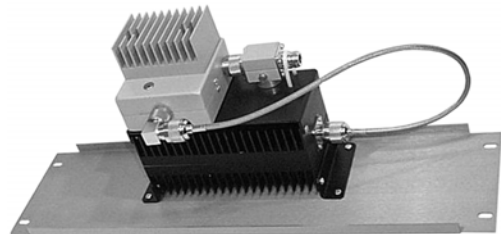
73414



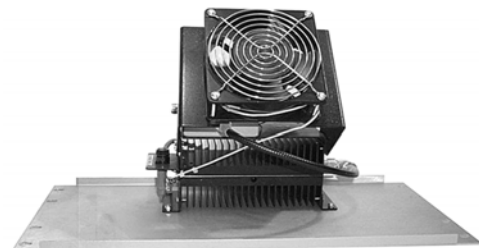
73514



73514/H



73515/H



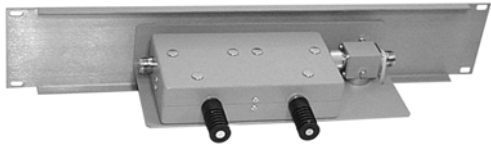
73515A/HF

# INTERMODULATION CONTROL DEVICES

## 66 - 88 MHz

**IM PANELS**

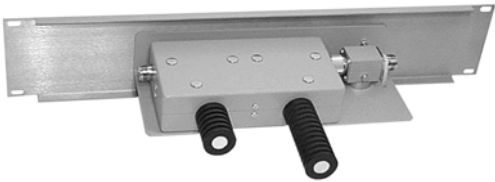
Model No. List Price	Frequency	Isolator Stage	Pwr: Input Refl	Bandwidth: Fixed	Insertion Loss	Isolation	Load Termination	Actual Dimensions Inches Metric	Ship Wt. lbs kg.
73422 \$1,330.00	66-88	Dual	30 W 15 W	See Page 42 Figure 1 & 2	0.90 dB	70+dB	15/15 W	3 1/2 x 19 x 5 89 x 483 x 127	8 3.7
73423 \$1,350.00	66-88	Dual	50 W 30W	See Page 42 Figure 1 & 2	0.90 dB	70+dB	15/30 W	3 1/2 x 19 x 5 89 x 483 x 127	8 3.7
73424 \$1,405.00	66-88	Dual	50 W 50 W	See Page 42 Figure 1 & 2	0.90 dB	70+dB	30/60 W	3 1/2 x 19 x 6 1/2 89 x 483 x 166	8 3.7
73523 OBSOLETE	66-88	Dual	75 W 30 W	See Page 42 Figure 1 & 2	0.90 dB	70+dB	15/30 W	3 1/2 x 19 x 5 89 x 483 x 127	8 3.7
73524 OBSOLETE	66-88	Dual	75 W 60 W	See Page 42 Figure 1 & 2	0.90 dB	70+dB	30/60 W	3 1/2 x 19 x 6 1/2 89 x 483 x 166	8 3.7
73524/H \$1,745.00	66-88	Dual	100 W 60 W	See Page 42 Figure 1 & 2	0.90 dB	70+dB	30/60 W	5 1/4 x 19 x 6 1/2 134 x 483 x 166	8 3.7
73525/H \$2,210.00	66-88	Dual	100 W 125 W	See Page 42 Figure 1 & 2	0.90 dB	70+dB	60/125 W	8 3/4 x 19 x 6 1/2 223 x 483 x 166	12 5.5



73422



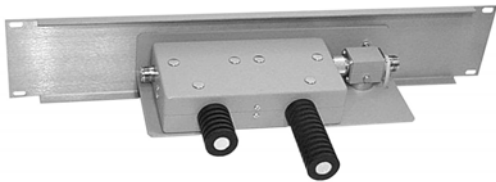
73423



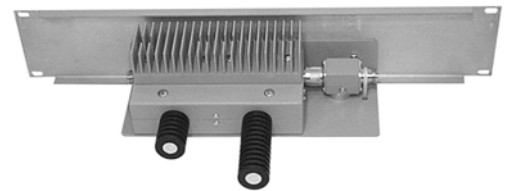
73424



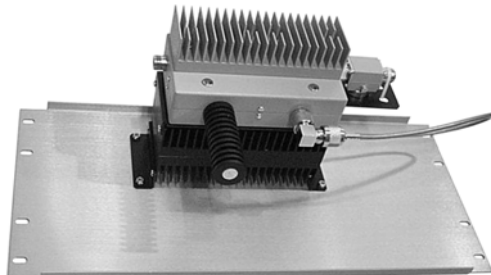
73523



73524



73524/H



73525/H