

CAVITY RESONATORS

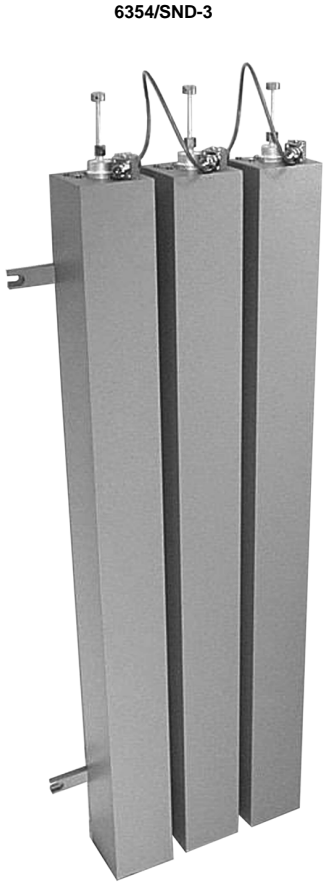
VHF 66 - 144 MHz

ELECTRICAL SPECIFICATIONS

Model Number	6354/SND	Contact Factory (623) 581-2875	Contact Factory (623) 581-2875
Frequency Band (MHz)	66-88	108-118	138-144
Input Power-See Appl. Notes	150 W		
Insertion Loss	See Application Notes on Page 45		
Attenuation	See Charts Below		
Impedance	50 Ω		
VSWR	1.25:1 or Better		
Electrical Length	1/4 λ		
Temp Range	- 22 to +140 °F - 30 to +60 °C		

MECHANICAL SPECIFICATIONS

Dim (d x w)	4" x 4"		
Individual Cavity	102 x102 mm		
Dim (Height)	Inches	46" - 53"	
Individual Cavity	Metric	1169 - 1347 mm	
Connectors	N Female		
Finish	EMR Gray		
Ship Weight: Single	20 lbs. (9.1 kg.)		
Dual	40 lbs. (18.2 kg.)		
Triple	56 lbs. (25.5 kg.)		



PASS NOTCH

Please call the factory for single cavity performance plot.

