

# BI & UNI-DIRECTIONAL ANTENNAS

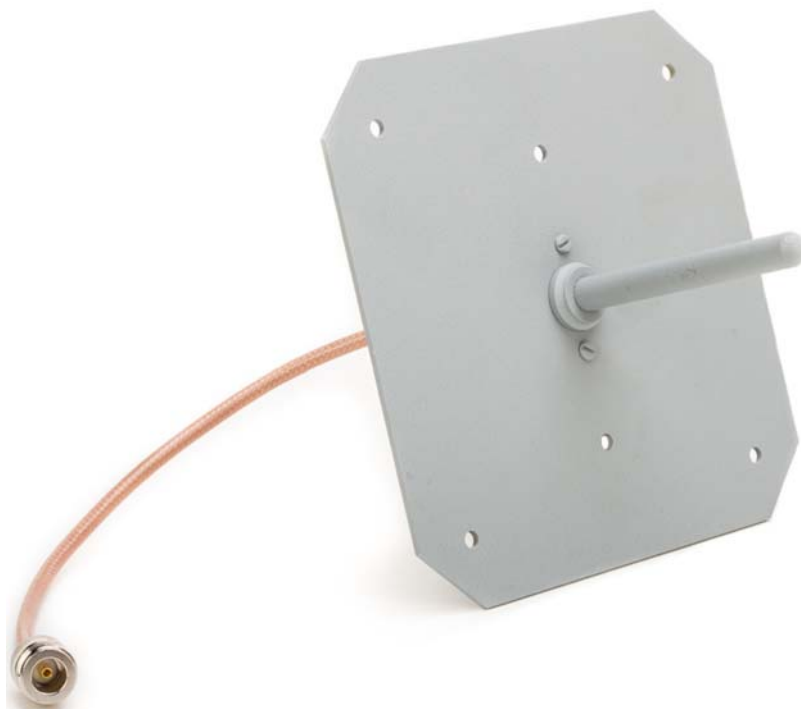
## 806 - 940 MHz

### ELECTRICAL SPECIFICATIONS

Model Number	B1S3/Q5BM	B1S3/Q5BF	B2S3/Q5BM	B2S3/Q5BF
Frequency Band	806-940	806-940	806-940	806-940
Description	Quarter Wave	Quarter Wave	Dipole	Dipole
Gain	Unity	Unity	Unity	Unity
Bandwidth	110 MHz	110 MHz	110 MHz	110 MHz
Nominal Impedance	50 Ohms	50 Ohms	50 Ohms	50 Ohms
VSWR	1.5:1 or Better	1.5:1 or Better	1.5:1 or Better	1.5:1 or Better
Temperature Range	- 22 to +140 °F - 30 to +60 ° C	- 22 to +140 °F - 30 to +60 ° C	- 22 to +140 °F - 30 to +60 ° C	- 22 to +140 °F - 30 to +60 ° C

### MECHANICAL SPECIFICATIONS

Connectors	N Male	N Female	N Male	N Female
Finish	EMR Gray	EMR Gray	EMR Gray	EMR Gray
Actual Dimensions				
Inches	4 1/2 x 6 x 6	4 1/2 x 6 x 6	6 1/2 x 1 x 2	6 1/2 x 1 x 2
Metric	115 x 153 x 153	115 x 153 x 153	166 x 26 x 51	165 x 26 x 51
Ship Wt.				
lbs	1	1	1	1
kg	0.5	0.5	0.5	0.5



B1S3/Q5BF