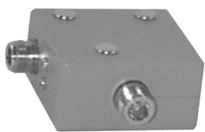


INTERMODULATION CONTROL DEVICES

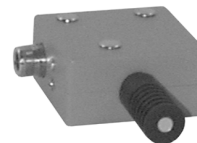
1000 - 1300 MHz

Model No. List Price	Description	Frequency	Pwr: Input Refl	Bandwidth: Fixed	Insertion Loss	Isolation	Load Term	Actual Dimensions Inches Metric	Ship Wt. lbs kg.
7740/0	Dual Circulator, 125 Watts	1000-1300	125 W -	Contact Factory	0.25 dB	30+ dB	0	1 3/8 x 3 1/2 x 3 35 x 89 x 77	3 1.4
7740/2	Single Isolator, 15 Watt Load	1000-1300	30 W 15 W	Contact Factory	0.25 dB	30+ dB	15 W	1 3/8 x 3 1/2 x 4 1/8 35 x 89 x 105	3 1.4
7740/3	Single Isolator, 30 Watt Load	1000-1300	60 W 30 W	Contact Factory	0.25 dB	30+ dB	30 W	1 3/8 x 3 1/2 x 4 1/8 35 x 89 x 105	3 1.4
7750/4	Single Isolator, 60 Watt Load	1000-1300	125 W 60 W	Contact Factory	0.25 dB	30+ dB	60 W	1 3/8 x 3 1/2 x 5 5/8 35 x 89 x 143	3 1.4
8740/00	Dual Circulator, 125 Watts	1000-1300	125 W -	Contact Factory	0.45 dB	60+ dB	0	1 3/8 x 5 1/2 x 3 35 x 140 x 77	3 1.4
8740/22	Dual Isolator, 15/15 Watt Load	1000-1300	30 W 15 W	Contact Factory	0.45 dB	60+ dB	15/15 W	1 3/8 x 5 1/2 x 4 1/8 35 x 140 x 105	3 1.4
8740/23	Dual Isolator, 15/30 Watt Load	1000-1300	60 W 30 W	Contact Factory	0.45 dB	60+ dB	15/30 W	1 3/8 x 5 1/2 x 4 1/8 35 x 140 x 105	3 1.4
8750/34	Dual Isolator, 30/60 Watt Load	1000-1300	125 W 60 W	Contact Factory	0.45 dB	60+ dB	30/60 W	1 3/8 x 5 1/2 x 5 1/2 35 x 140 x 140	3 1.4

ISOLATORS & CIRCULATORS



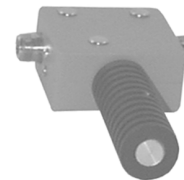
7740/0



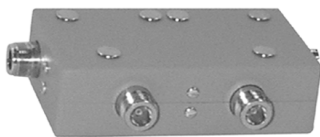
7740/2



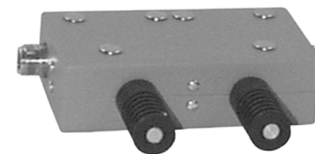
7740/3



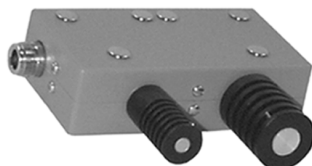
7750/4



8740/00



8740/22



8740/23



8750/34